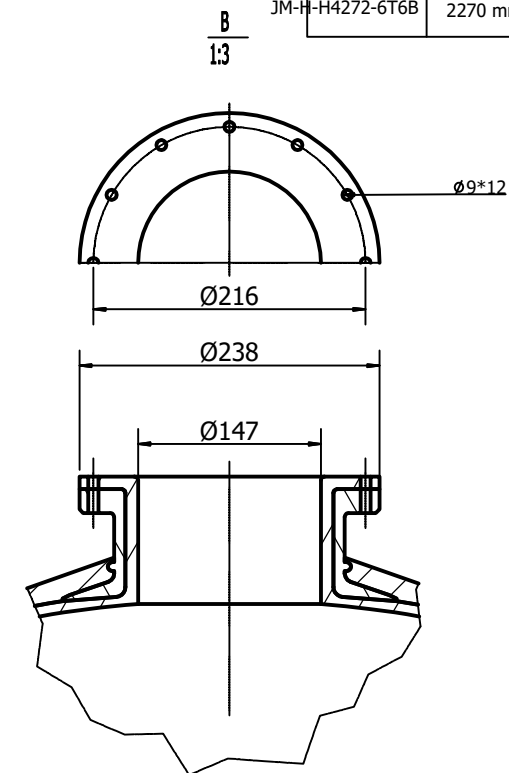
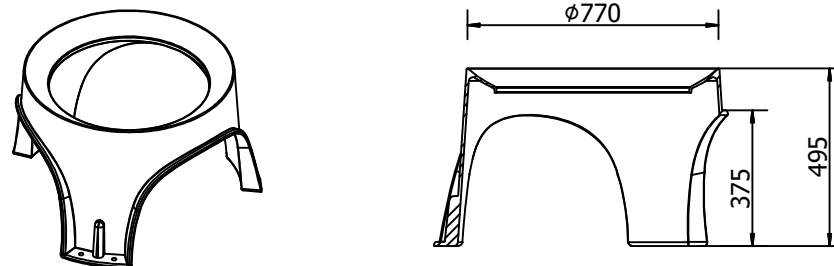
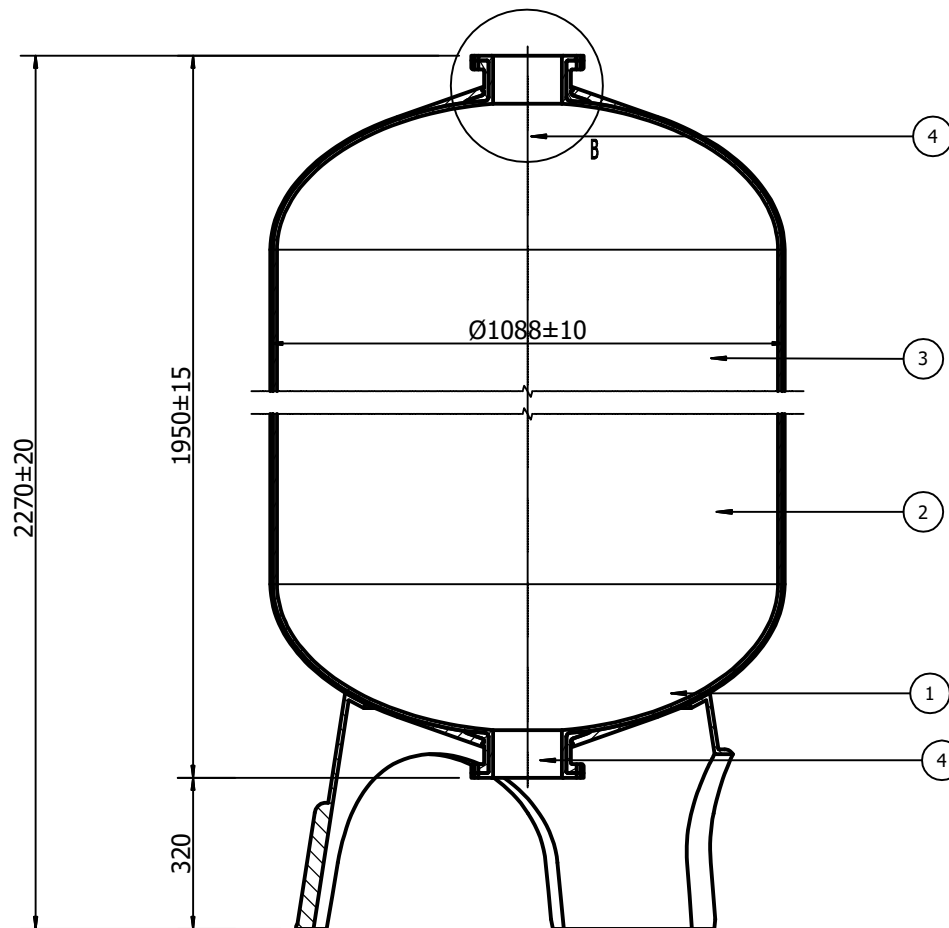


Model	Height	Vol	Weight
H-H4272-6T6B	2270 mm	1389 L	



NOTES:

1. Inner shell – Polyethylene (PE) seamless one-piece tank liner
2. Outer shell – Continuous strands of fiber-glass with high strength epoxy resin
3. Bottom base – FRP reinforced tripod base
4. Opening – 6 inch Aluminium opening
5. Tanks meet all applicable specification of NSF/ANSI 061 standard
6. Operating Specifications:
 - Maximum Working Pressure : 150 PSI (1.0MPa)
 - Temperature : -149 C (-34-120 F)
 - Maximum Vacuum: 127mm Hg(5"Hg)
7. Liner inspection
 - No more than 20 internal / external blemishes, burnt debris
 - No internal / external blemishes, burnt debris larger than 5 *5 mm
8. Surface finish
9. Surface to be free of resin, glass,nicks,barbed filament
10. Tank to be bonded to base
11. The base to be level correction
12. Top and bottom opening to be parallel,top opening to be parallel with the base

4	6"Flange	2	Aluminum	
3	Linner	1	PE	
2	Outer Shell	1	FRP	
1	Base	1	SMC	
ITEM	NAME	NO.	MATERIAL	REMARK

						Subsidiary Column		
						Jieming International Trading		
						FZCO		
						Ewater		
标记	数量	单位	英文文件号	型号	日期	阶段标记	来源(国)	比例
设计				和源发				
审核	杨朝人	杨朝江						

本图尺寸均以mm计，图中尺寸请勿放大

JM-H-H4272-6T6B